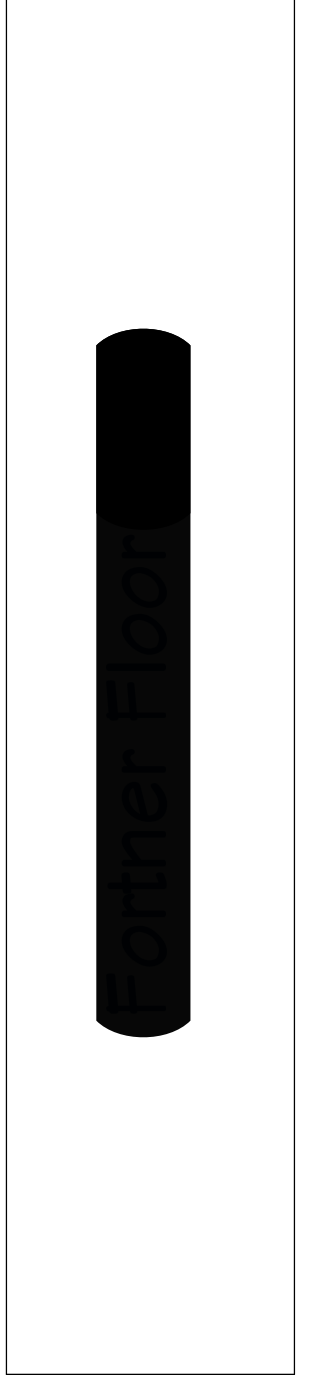


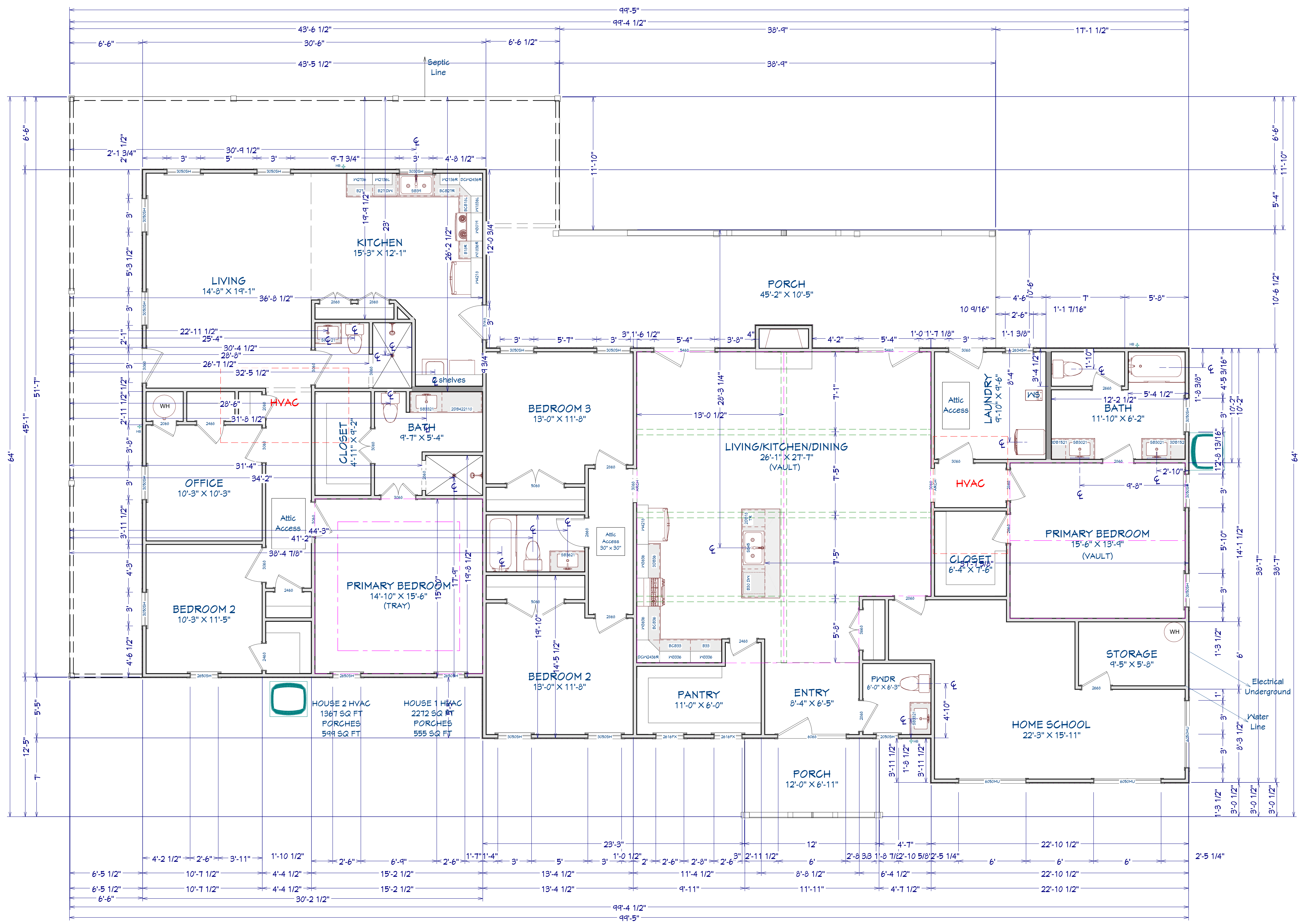
NUMBER	DATE	REVISION BY	DESCRIPTION



DRAWINGS PROVIDED BY:
CASTLEBERRY PROPERTIES, LTD.

DATE:
 6/21/2023

SCALE:



1/4 IN = 1 FT



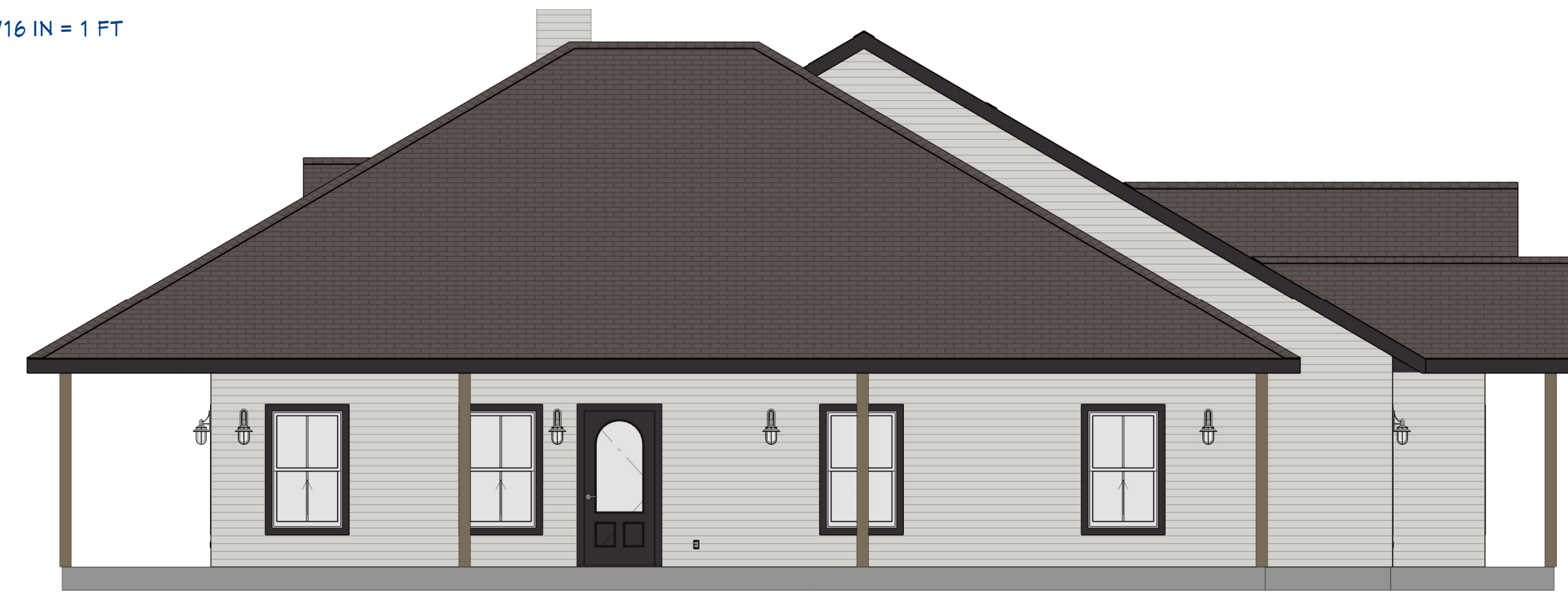
Front Elevation

3/16 IN = 1 FT



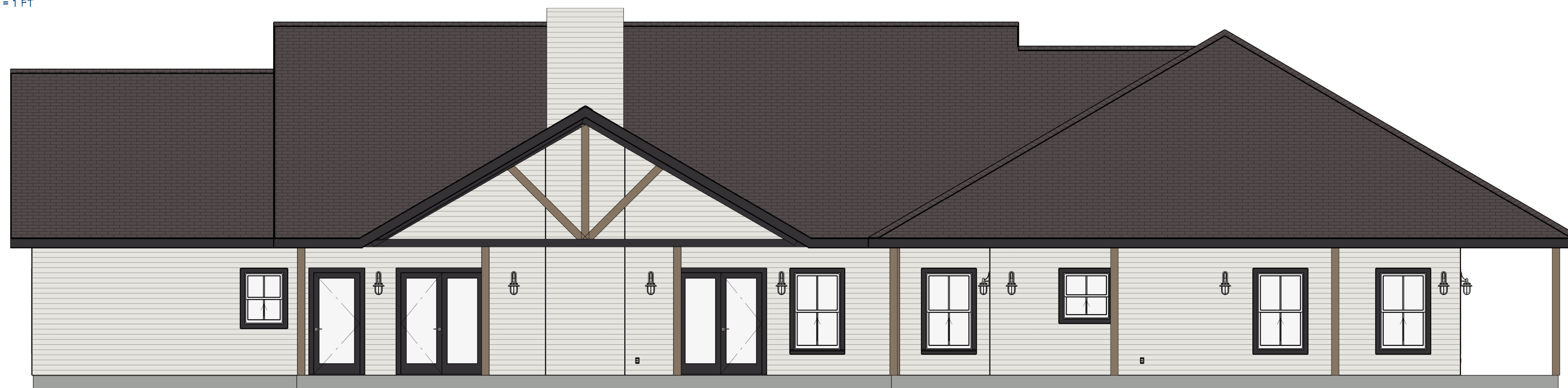
Right Elevation

3/16 IN = 1 FT



Left Elevation

1/4 IN = 1 FT



Back Elevation

P-1

NUMBER	DATE	REVISION BY	DESCRIPTION



DRAWINGS PROVIDED BY:
CASTLEBERRY PROPERTIES, LTD.

DATE:

6/21/2023

SCALE: